

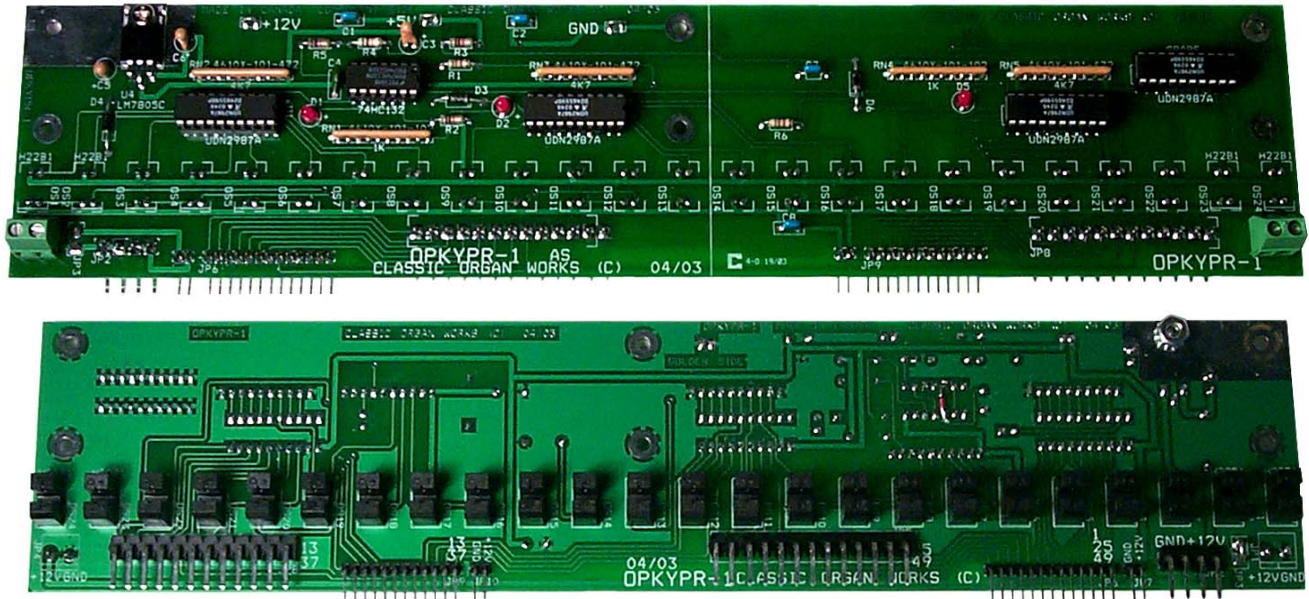
# Classic Organ Works

WWW.MIDIWORKS.CA

905-475-1275

MIDISALES@ORGANWORKS.COM

## OPTICAL KEY SWITCHES OPKYPR-1



### Description

The OPKYPR-1 interface board translates optical keyswitch data into parallel signals (one output per key). They are intended to replace keyswitch contacts on older keyboards for improved reliability.

The boards are designed to fit under standard 33-inch wide wooden-key manuals behind the pivots when balanced keys are used. That is, they are rear-mounted.

Switching is achieved by adjustable shutters attached to the keys that interrupt infra-red light beams. The shutters move out of the sensor gap to allow the beam to pass and produce a +12V positive signal at each board output. Adjustments are from above.

The basic board is 24 keys wide, so the set comprises two of those plus a shorter one of 13 keys only.

The boards are mounted onto stiff aluminum rails to prevent warping during playing. The mounting rail fastens to the keyboard pivot rail so that the sensors are located where the key travel is about one-third that of the key fronts.

### Features

- Mounted under rear of balanced keys
- One output per key (parallel keying)
- Three-board set fits under standard keyboards up to 72 keys wide and is simply shortened for 61 keys.
- OPKYPR-1 senses the shutters moving out
- Adjustments to shutters from above.
- Power: +8V to +15V D.C. from console supply.
- Dimensions (WxL): 13"x2.5" (33x6.35cm)

### Applications

The OPKYPR-1 is intended to replace mechanical contacts on standard-pitch keyboards of any quantity of keys. Typically, a set of three boards mounts behind pivots on balanced keys. Outputs are parallel (one output per key).