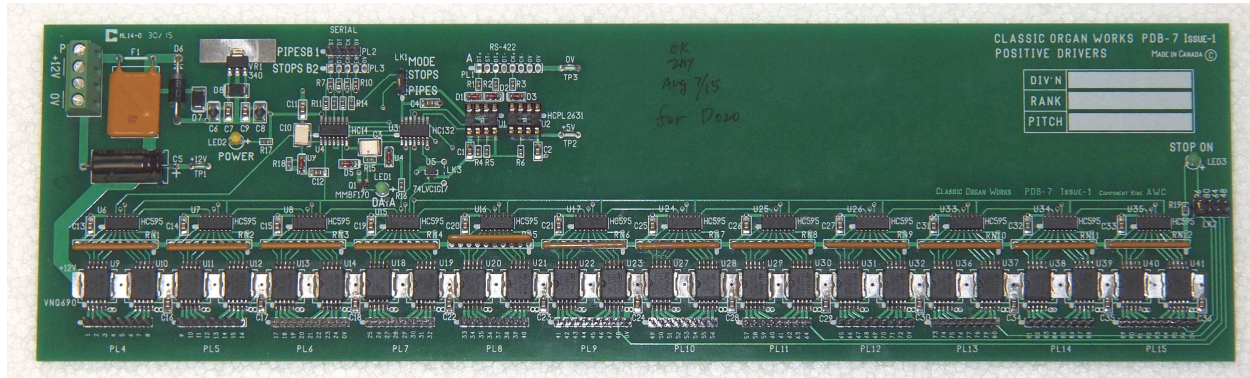


# Classic Organ Works

2800 JOHN STREET, UNIT 4, MARKHAM, ONTARIO CANADA L3R 0E2  
WWW.ORGANWORKS.COM 905-475-1275 OR 1-888-812-9717 INFO@ORGANWORKS.COM

## PDB-7: High-Power Positive Magnet Driver



### Description

The Classic Organ Works Magnet Driver Board (PDB-7) can drive most kinds of low-resistance stop or pipe magnets. As such, it is a direct replacement for the PDB-5A with all connectors in similar places.

The main differences are the use of surface-mount components and greater current-output capability. All connections, except the power input, are via 0.100"-pitch headers.

In its simplest form, the board can provide up to 96 high-current positive-drive outputs for pipe magnets or, up to 48 stops with pulsed outputs, with common 0V ground.

The PDB-7 requires a single power source of +12 to +15V. Higher -voltage versions up to 30V are available. The current drawn depends on the use, being the sum of all active outputs and can be considerable, depending on the resistance of the magnets and how many stops or notes are activated.

A self-resetting fuse protects against excessive current.

The PDB-6 can be used for low-resistance dual-magnetic stop-action magnets (console drawknobs, tabs, etc.) if a Mode link is moved to suit pulsed operation.

The board can be driven by Classic's RS-422 optically-isolated signals or by Classic's serial inputs. It will work with either kind simultaneously and no switching is necessary.

### Features

- o 96 High-powered positive-drive pipe magnet drivers, 1 Amp nominal
- o Outputs overload and short-circuit protected
- o All outputs on 0.100" pitch header pins
- o Signal Inputs can be:
  - Optically-isolated Serial RS-422 or
  - Serial Classic for Classic control systems
- o Stop LED, selectable to Output 48, 64, 80 or 96
- o Link to select basic function for Pipes or Stops
- o Single-voltage power input, +12V to +15V
- o Power and Data LEDs on board
- o Terminal Blocks for supply input
- o Size: 14" x 4" (35.5 x 1.02 cm) (w x h)

### Applications

Can drive up to 96 low-resistance pipe magnets if used as a normal magnet driver.

Can be used to drive up to 48 low-resistance dual-magnetic stop-tab actions (pulsed operation).

High-current pipe magnet drivers, 1 Amps nominal (for magnets as low as 20 Ohms resistance). The driver chips are rated for 10-Amp switching.

Controlled by Classic serial or optically-isolated RS422 serial inputs.